



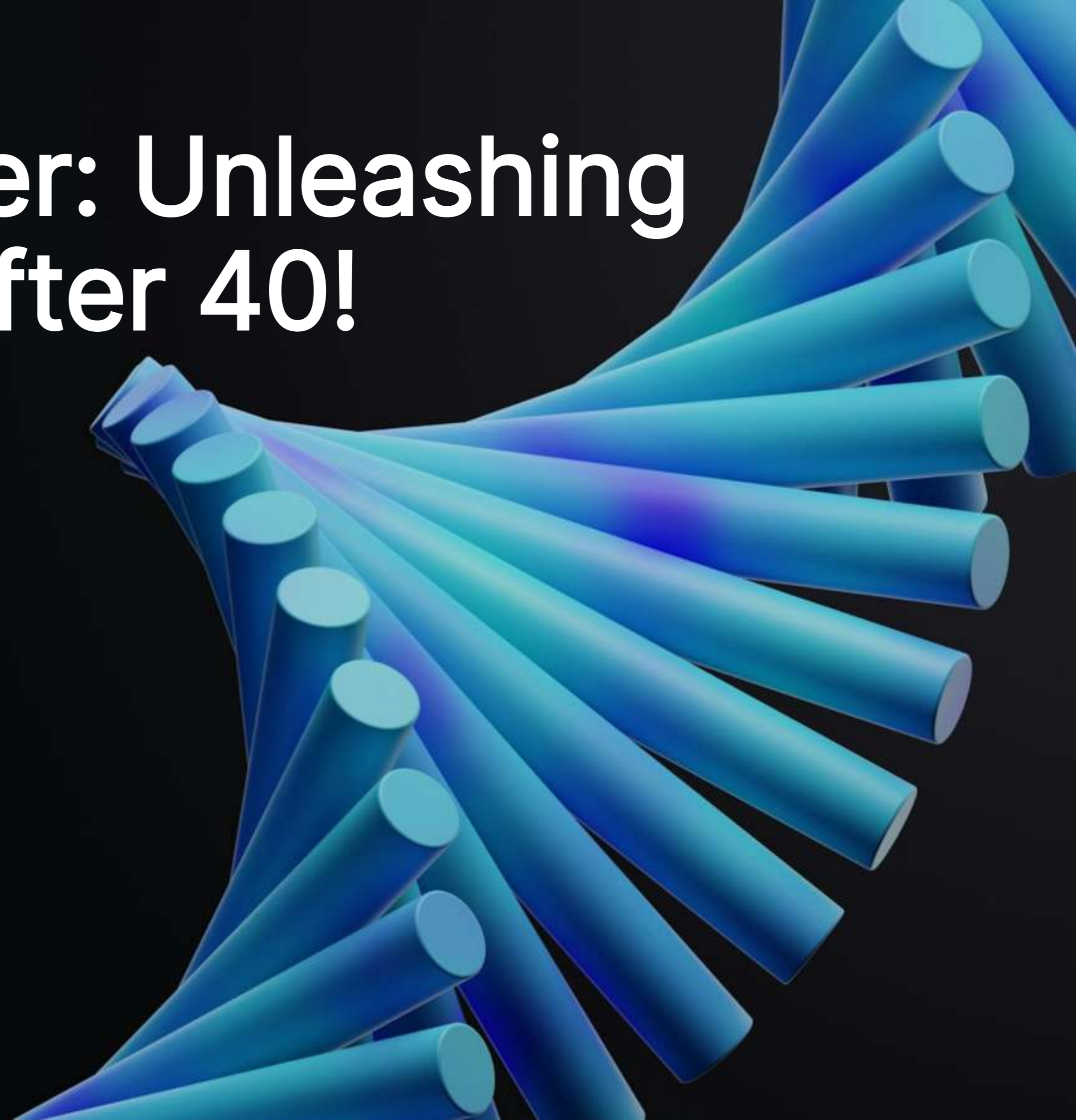
Data: 2025.8.22

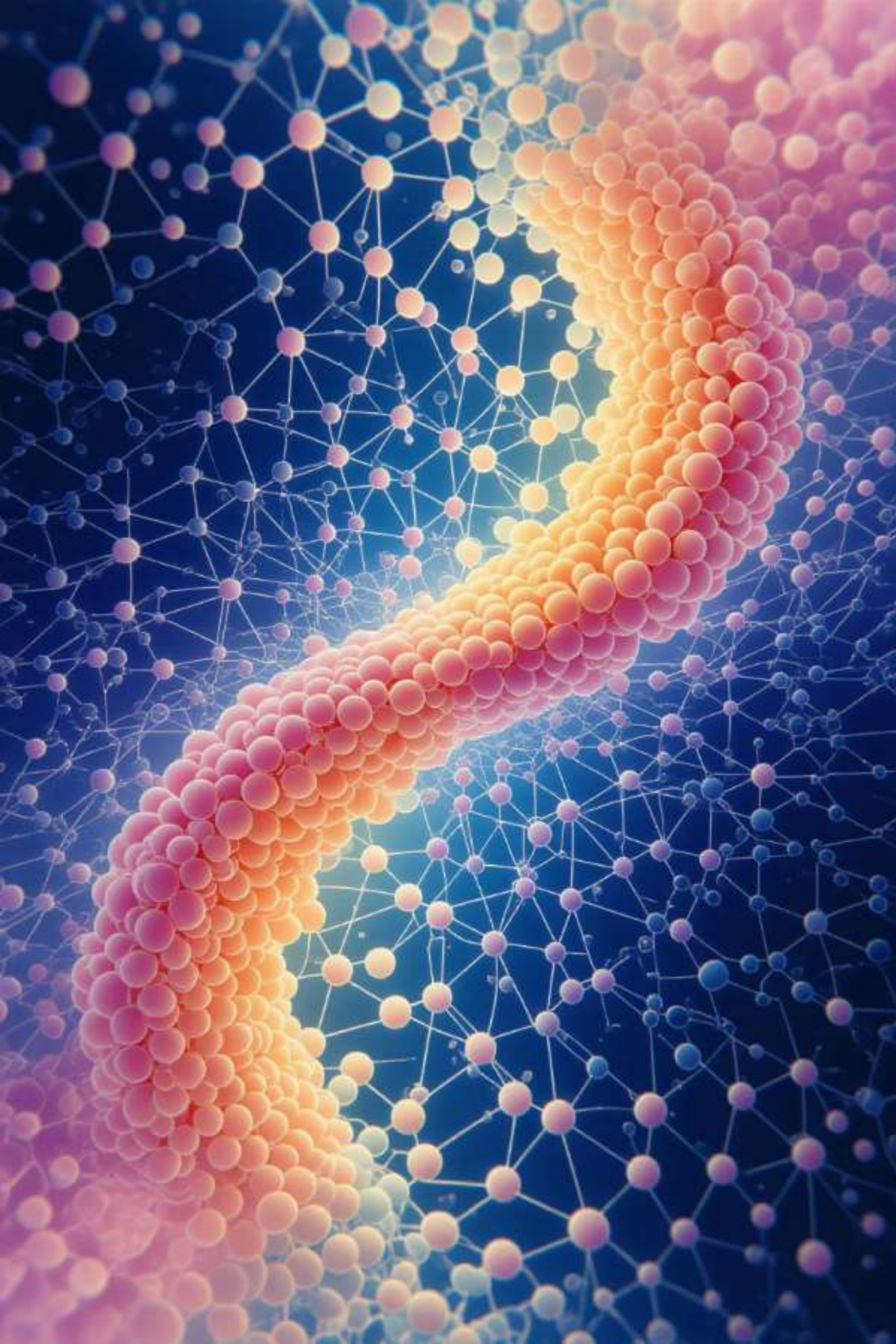
# Peptide Power: Unleashing Your Prime After 40!

Understanding Structure, Function, and Applications



Presenter: Thorsten Eggert





# Contents

---

Introduction to Peptides	01
Peptide Science and Functionality	02
Challenges in Peptide Adoption	03
Nasal Inhaler Peptides: Innovation in Delivery	04
Practical Guidelines: Dosage, Cycling, and Combinations	05
Lifestyle Foundations for Peptide Success	06
Conclusion: Your Peptide Playbook	07

---



# Contents

<b>Introduction to Peptides</b>	<b>01</b>
Peptide Science and Functionality	02
Challenges in Peptide Adoption	03
Nasal Inhaler Peptides: Innovation in Delivery	04
Practical Guidelines: Dosage, Cycling, and Combinations	05
Lifestyle Foundations for Peptide Success	06
Conclusion: Your Peptide Playbook	07

# ++ Unlocking the Power of Peptides



## ▪ What Are Peptides?

- Peptides are short chains of amino acids, essentially mini-proteins, that serve as messenger molecules in the body. With precision and speed, *they instruct cells on how to perform vital functions like repair and regulation.*
- Think of peptides as the body's cellular coaches, signaling hormones, immune responses, and tissue regeneration pathways.

Their role in maintaining balance and optimizing bodily functions makes them essential molecular tools for health and vitality.

## ▪ The Vital Role of Peptides in the Body

- From **hormone regulation, immune defense, to tissue repair, peptides are the unsung heroes maintaining physiological harmony.** They influence metabolism, growth, inflammation control, and even anti-aging mechanisms. Their multitasking ability means they support recovery and renewal constantly, ensuring that whenever the body is stressed or damaged, peptides rally the repair crew promptly and efficiently. Understanding peptides equips you to harness this inherent power for personal health optimization.

## ▪ Why Peptides Matter Today

- **Peptides represent a new frontier in health and wellness, blending natural biology with modern science.** Unlike larger proteins, their small size allows targeted and rapid effects. Though traditionally underrecognized by mainstream medicine, peptides are gaining momentum as potent tools for enhancing vitality, muscle recovery, fat loss, and more. By building a solid knowledge foundation, you prepare yourself to leverage these molecules effectively and safely in your wellness journey.

# ++ Overview of Peptide Topics



## What This Presentation Covers

We will explore the fascinating [history of peptides](#), tracing their journey from early medical breakthroughs to modern pharmaceutical marvels. You'll learn how peptides work mechanistically within the body, and discover why their full potential remains underutilized by most doctors. Additionally, we focus on [innovative delivery methods](#), such as nasal inhalers, that enhance convenience and effectiveness for specific peptide stacks targeting muscle repair, tanning, libido, and weight loss. [Finally, guidance on dosages, cycling strategies, and lifestyle integration will prepare you to apply peptide knowledge in practical ways.](#)



## Setting Goals for Peptide Mastery

[Our goal is for you to walk away equipped with clear, actionable understanding of peptides—not just theoretical knowledge, but insights you can apply.](#) From dosing nuances to smart combinations, this presentation arms you with tools that stick. With a solid lifestyle foundation underpinning your efforts, peptides can amplify results rather than replace basic health principles. Get ready to empower yourself with peptide science and practical advice that advances your vitality and transformation journey.



# Contents

Introduction to Peptides	01
<b>Peptide Science and Functionality</b>	<b>02</b>
Challenges in Peptide Adoption	03
Nasal Inhaler Peptides: Innovation in Delivery	04
Practical Guidelines: Dosage, Cycling, and Combinations	05
Lifestyle Foundations for Peptide Success	06
Conclusion: Your Peptide Playbook	07

# ++ Peptides: Biological Messengers



## How Peptides Work in the Body

Peptides **act as signaling molecules** that instruct cells and organs to perform specific tasks, such as producing hormones, repairing tissue, or modulating immune responses. Their **short amino acid chains allow for quick interaction with receptors, triggering cascades of cellular activity**. Unlike larger proteins, peptides' manageable size facilitates absorption and systemic impact. This biological choreography ensures that processes like **growth, metabolism, and healing run with precision** and efficiency, underscoring why peptides are vital for maintaining homeostasis and peak performance.

## Key Biological Functions of Peptides

The primary roles of peptides include hormone regulation—**balancing growth hormones, stress hormones, and metabolic hormones; immune system support—reducing inflammation and enhancing defenses against pathogens; and tissue repair**—accelerating recovery in muscles, tendons, and skin after injury or stress. Additionally, some peptides influence **fat metabolism**, promoting energy utilization and aiding weight management. Peptides effectively act as the body's repair crew and performance enhancers, perpetually ready to restore and optimize functions.

## Everyday Impact of Peptides on Health

Beyond obvious repair roles, peptides regulate **blood pressure**, manage fluid balance, and contribute to anti-aging processes. Their versatility means they help **maintain muscle growth, reduce chronic inflammation, and sustain overall vitality**. Regularly harnessing peptides through scientific means can create a feedback loop of enhanced recovery, better energy levels, and improved resilience. By understanding their broad impact, you are empowered to incorporate peptide support as a strategic element in holistic health management.

# ++ Historical Context of Peptide Use



## 01 Early Medical Breakthroughs in the 1920s

The story of peptides in medicine began with the isolation of insulin in the 1920s, a landmark event that revolutionized diabetes treatment and saved millions of lives. Initially derived from animal extracts, insulin represented the first practical application of peptides in therapeutic settings. This breakthrough laid the groundwork for viewing peptides as functional molecules capable of correcting hormone deficiencies and medical conditions, marking the dawn of peptide-based therapies.

## 02 Mid-Century Advances: Oxytocin and Vasopressin

By the 1960s, research identified other pivotal peptides like oxytocin and vasopressin, catalysts for labor induction and blood pressure regulation respectively. These cyclic peptides demonstrated that small chains could exert precise, targeted physiological effects. Their medical use validated peptides as effective agents in managing specific conditions, fostering broader scientific interest and advancing pharmaceutical development for hormone-related therapies.

## 03 Modern Expansion Since 2000

The 21st century witnessed explosive growth in peptide therapeutics, with over 36 FDA-approved peptide drugs emerging since 2000. These innovations address a wide range of ailments—from cancer and metabolic disorders to neurological conditions. Globally, more than 70 peptide drugs are approved, with hundreds undergoing trials. This rapid evolution highlights peptides as versatile, adaptable therapeutics and positions them at the cutting edge of personalized medicine and health optimization strategies.



# Contents

Introduction to Peptides	01
Peptide Science and Functionality	02
<b>Challenges in Peptide Adoption</b>	<b>03</b>
Nasal Inhaler Peptides: Innovation in Delivery	04
Practical Guidelines: Dosage, Cycling, and Combinations	05
Lifestyle Foundations for Peptide Success	06
Conclusion: Your Peptide Playbook	07

# ++ Low Uptake Among Medical Professionals



## 01 FIRST

### Understanding the 5% Puzzle

Despite their powerful potential, peptide therapies remain underutilized in mainstream medicine, with an estimated 5% adoption rate among doctors. Contributing factors include limited awareness within the broader medical community, regulatory complexities restricting widespread approval, and a cultural tendency to favor well-established, FDA-sanctioned pharmaceuticals. [The conservative nature of conventional medicine often delays the acceptance of newer modalities](#), even when emerging data supports efficacy.

## 02 SECOND

### Regulatory and Practical Barriers

Peptides often fall into gray areas—considered investigational or complementary rather than primary treatments. Insurance rarely covers peptide therapies, making them costly and relegated to out-of-pocket expenses in integrative clinics. Additionally, the novelty of peptide science means long-term studies and large-scale clinical data are still accruing, causing skepticism. [These challenges slow access and adoption, but knowledge and demand within wellness sectors continue to grow, signaling impending change.](#)

## 03 THIRD

### Overcoming Misconceptions

Misunderstandings position peptides as "alternative" or fringe, rather than complementary health partners. Educating both providers and patients to demystify peptides is crucial for wider acceptance. [Recognizing peptides as natural, biologically congruent agents, rather than synthetic drugs per se, can shift perspectives.](#) Staying informed and advocating for evidence-based use positions learners and clinicians ahead of the curve in embracing these transformative molecules.

# ++ The Path Forward: Inform and Empower



## Promoting Awareness and Education

Building a broader base of knowledge about peptide science helps clinicians and consumers make informed decisions. Access to accurate, peer-reviewed information counters myths and highlights therapeutic potentials. Education initiatives targeting medical professionals can accelerate integration into standard care, closing the gap between innovative science and practice.

## Navigating Costs and Access

As peptide production scales and generics emerge, cost barriers should diminish over time. Telemedicine and specialized clinics offer alternate channels for accessing treatments responsibly. Responsible sourcing and consultation ensure safety and efficacy, reducing risks commonly associated with poorly regulated markets.

## Embracing Peptides as Part of Holistic Wellness

Peptides fit best within a comprehensive wellness framework that prioritizes lifestyle factors alongside targeted therapies. Integrative medicine models respecting natural biology and individual variation foster peptide use that complements diet, exercise, and rest. Advocates for peptides as tools to unlock endogenous healing are paving the way for future medical paradigms focused on health optimization rather than only disease management.



# Contents

---

Introduction to Peptides	01
<hr/>	
Peptide Science and Functionality	02
<hr/>	
Challenges in Peptide Adoption	03
<hr/>	
<b>Nasal Inhaler Peptides: Innovation in Delivery</b>	<b>04</b>
<hr/>	
Practical Guidelines: Dosage, Cycling, and Combinations	05
<hr/>	
Lifestyle Foundations for Peptide Success	06
<hr/>	
Conclusion: Your Peptide Playbook	07

---

# ++ Advantages of Nasal Delivery



01

## User-Friendly and Efficient Administration

Nasal inhalers offer a needle-free, convenient method for administering peptides, increasing compliance and ease of use. The rich blood supply in nasal membranes allows rapid absorption, bypassing digestive degradation and the first-pass liver effect encountered in oral routes. This direct access leads to faster systemic circulation and onset of action, enhancing effectiveness particularly for time-sensitive peptides requiring steady plasma levels.

02

## Targeted Effects Through Nasal Absorption

Nasal delivery permits peptides to enter the bloodstream and, in some cases, the central nervous system more efficiently. This positioning is advantageous for peptides that target neurological pathways, hormonal axes, or immune function. Users benefit from predictable pharmacokinetics and convenience, making nasal sprays ideal for peptides requiring frequent, controlled dosing with minimal discomfort.

03

## Growing Popularity and Versatility

The development of nasal peptide sprays responds to consumer demand for non-invasive, easy-to-administer therapeutics. From muscle repair stacks to compounds targeting tanning, libido, and weight loss, nasal delivery enhances practicality without sacrificing potency. This innovation is democratizing access to peptide therapies outside clinical settings and accelerating adoption in lifestyle and performance communities.

# ++ Key Peptide Stacks Delivered Nasally



## Wolf Stack: TB500 & BPC157 for Muscle Repair

The **Wolf Stack** combines two powerful peptides: BPC157, known for promoting tendon and ligament healing, and TB500, which enhances actin production to speed tissue regeneration. Nasal delivery ensures rapid systemic impact, facilitating quicker recovery from intense workouts or injuries. This duo reduces inflammation and accelerates repair, making it highly valued by athletes and active individuals seeking to push their physical limits safely.

## Melanotan II for Tanning and Libido

Melanotan II stimulates melanin production, enabling a **natural-looking tan without harmful UV exposure**. Beyond pigmentation, it activates melanocortin receptors that enhance **libido and sexual arousal**. Delivered via nasal spray, Melanotan II offers convenience and reliable absorption, providing dual benefits for appearance and vitality in a simple regimen.

## Frag 176-191 for Targeted Weight Loss

Frag 176-191 is a fragment of human growth hormone specifically focused on fat metabolism without impacting blood sugar or growth pathways. Its nasal form enables fast absorption, targeting stubborn fat deposits and promoting lipolysis. Regular use supports **leaner body composition** when combined with diet and exercise, positioning this peptide as a strategic tool in body sculpting protocols.



# Contents

Introduction to Peptides	01
Peptide Science and Functionality	02
Challenges in Peptide Adoption	03
Nasal Inhaler Peptides: Innovation in Delivery	04
<b>Practical Guidelines: Dosage, Cycling, and Combinations</b>	<b>05</b>
Lifestyle Foundations for Peptide Success	06
Conclusion: Your Peptide Playbook	07

# ++ Dosage Recommendations



## Wolf Stack Dosages

BPC157 nasal spray dosing typically ranges from 250–500 mcg per day, administered as 1–2 sprays per nostril depending on product strength. TB500 is generally dosed at 2–5 mg weekly, divided into 2–3 doses for optimal distribution. Beginners might start with 1 spray twice daily for both peptides to gauge tolerance. Monitoring response and incremental adjustment ensures precision dosing that maximizes recovery benefits while minimizing risks.

## Melanotan II Dosages

Melanotan nasal spray loading involves 0.5–1 mg daily (1–2 sprays per nostril) for 7–10 days to initiate tanning and libido effects. Maintenance dosing usually decreases to 0.5 mg twice weekly for sustained results. For libido enhancement specifically, 1–2 sprays 1–4 hours prior to activity provide targeted stimulation. Consistency and adherence to recommended dosing prevent side effects and sustain the peptide's benefits.

## Frag 176–191 Dosages

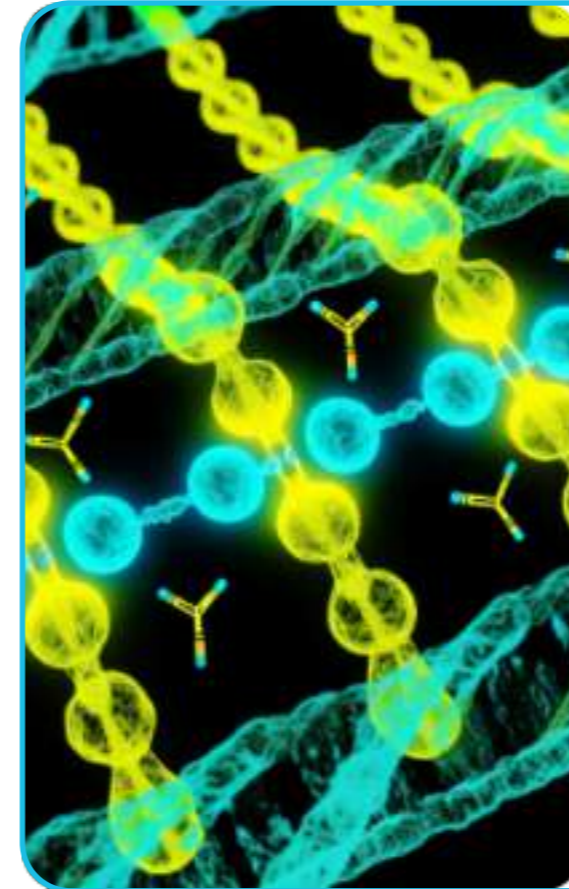
Fat loss doses for Frag 176–191 nasal spray range between 250–500 mcg, administered 1–2 times daily on an empty stomach to optimize absorption and metabolic impact. Typical examples include 250 mcg morning and evening doses. Tracking progress and adjusting based on fat reduction and energy levels allow fine-tuning for individualized effectiveness.

# ++ Cycling Protocols



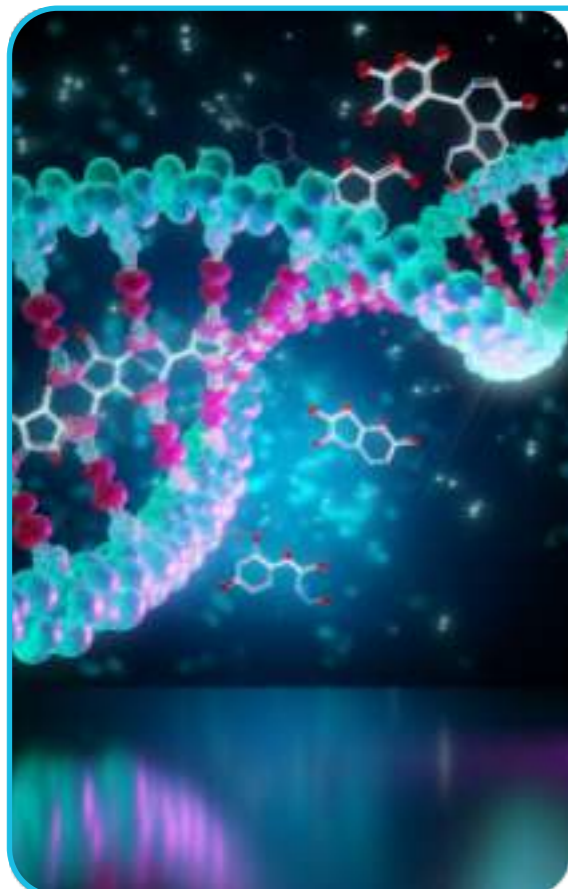
## Wolf Stack Cycling

Cycling with the Wolf Stack involves **4-6 weeks of continuous use followed by 2-4 weeks off to prevent receptor tolerance**. A typical cycle might comprise daily full doses Weeks 1-4, reduced maintenance dosing Weeks 5-6, then an off period focusing on natural recovery. Maintaining cycling discipline ensures sustained effectiveness and reduces risks related to chronic peptide exposure.



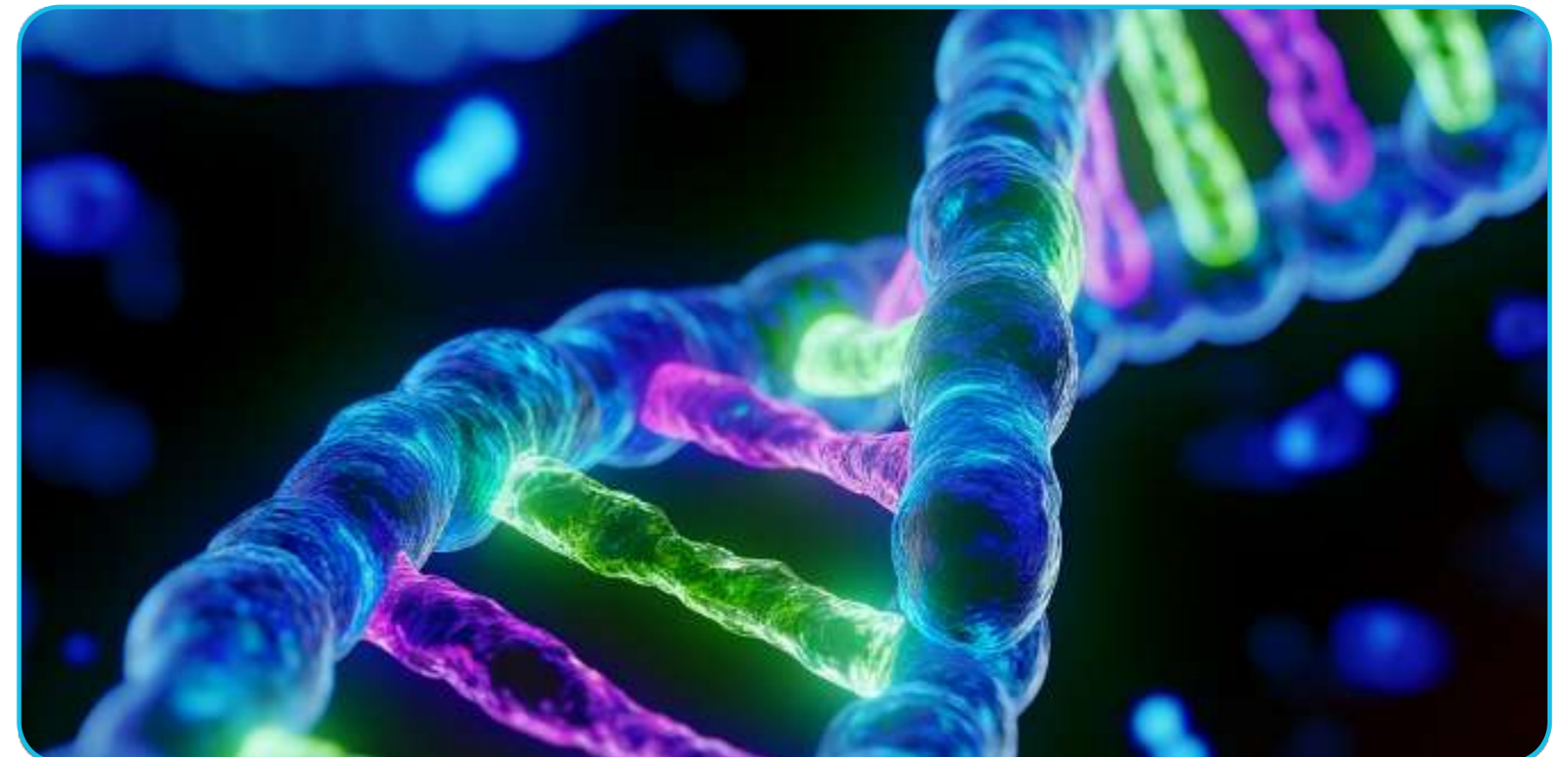
## Melanotan Cycling

Melanotan II users **cycle for 4-8 weeks on and 2-4 weeks off to maintain responsiveness** and avoid side effects like nausea. This approach also includes strategic sun exposure rotations for natural pigmentation boosts, enhancing the peptide's tanning benefits while protecting skin health. Compliance with cycling recommendations maximizes safety and result durability.



## Frag 176-191 Cycling

For Frag 176-191, a **4-6 week on protocol followed by 2 weeks off helps sustain fat metabolism sensitivity**. Pairing cycling with cardio routines amplifies fat burning, while off periods preserve receptor receptivity and prevent plateauing. Such cycling ensures steady, manageable fat loss over time instead of abrupt or diminishing returns.



# ++ Smart Peptide Combinations



## Enhancing Wolf Stack Effects

Combining the Wolf Stack with growth hormone-releasing peptides like CJC-1295 further amplifies muscle building and recovery. Adding KPV peptide can boost anti-inflammatory effects, enhancing overall tendon and ligament healing. Optimal results require concurrent protein-rich diets and strength training regimens, emphasizing synergistic action where the whole is greater than the sum of parts.

## Melanotan Stacking Strategies

Melanotan enhances tanning and libido but stacks well with PT-141 for an extra libido kick. Combining with fat-burning peptides rounds out the aesthetic goal of a lean, glowing body. Complementing stacks with sunscreen and hydration routines protects skin and maximizes the cosmetic benefits, making integrated approaches vital for compound wins.

## Fat Loss Synergies with Frag 176-191

Stacking Frag 176-191 with AOD 9604 increases targeted fat burning, while coupling with BPC157 aids muscular recovery during intensified workouts. Integrating calorie control and exercise completes the protocol, as peptide stacks enhance but do not replace fundamental weight management principles. Strategic stacking leverages molecular pathways for maximum effect.



# Contents

Introduction to Peptides	01
Peptide Science and Functionality	02
Challenges in Peptide Adoption	03
Nasal Inhaler Peptides: Innovation in Delivery	04
Practical Guidelines: Dosage, Cycling, and Combinations	05
<b>Lifestyle Foundations for Peptide Success</b>	<b>06</b>
Conclusion: Your Peptide Playbook	07

# ++ Nutrition: Fueling Peptide Action



- **Prioritize Protein and Nutrient-Dense Foods**
- Effective peptide use demands a solid nutritional foundation. [Protein from meats, eggs, and plant sources](#) supplies amino acids essential for tissue repair and muscle growth. Vegetables provide antioxidants and micronutrients that support immune function and reduce oxidative stress. Healthy fats from sources like nuts, seeds, and olive oil supply energy and cellular building blocks. Avoid processed and sugary foods; instead, focus on clean, whole foods that fuel your peptides' regenerative effects efficiently.
- **Simple Framework for Eating Right**
- Use the easy-to-remember formula: [Plate = Protein + Produce + Power fats](#). Each meal should balance these macronutrients to provide sustained energy and raw materials for repair. This approach maximizes peptide efficacy by optimizing the body's readiness to respond and recover. Remember, peptides amplify your inputs; without good nutrition, gains are limited.



# ++ Exercise: Amplifying Peptide Benefits



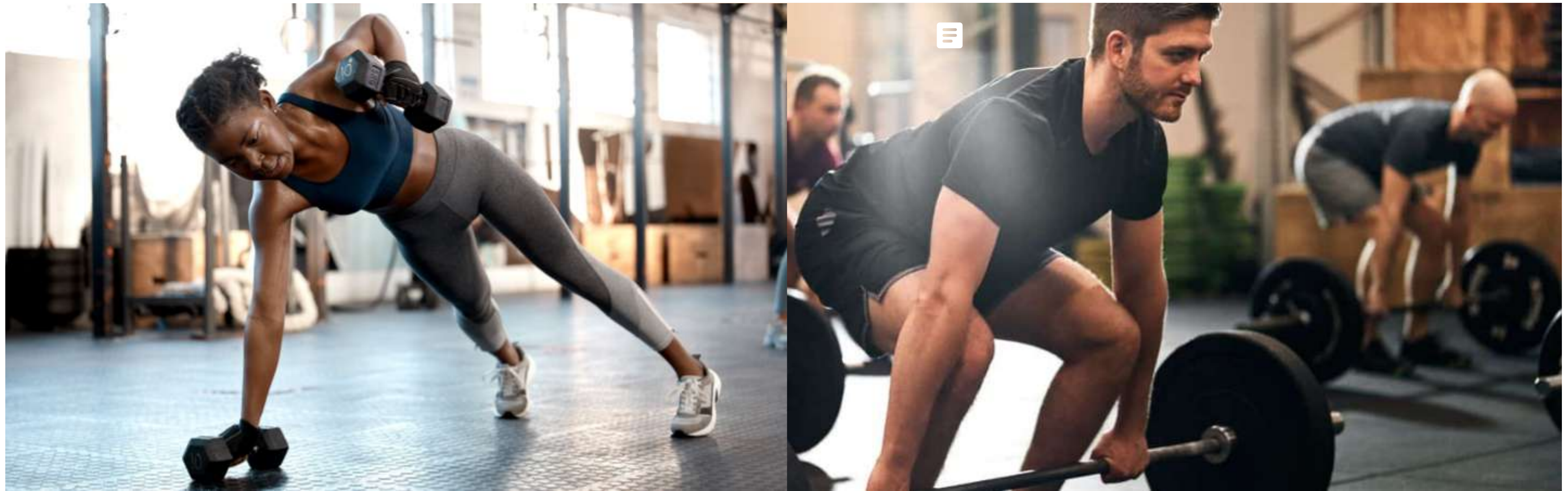
## Combining Training Modalities

A balanced exercise routine including strength training, cardiovascular workouts, and mobility exercises maximizes peptide-assisted recovery and performance. **Strength training stimulates muscle growth** pathways that peptides enhance, while cardio improves overall metabolic health and fat burning. Mobility prevents injury and supports longevity, creating an ideal environment for peptides to work optimally.



## Listening to Your Body

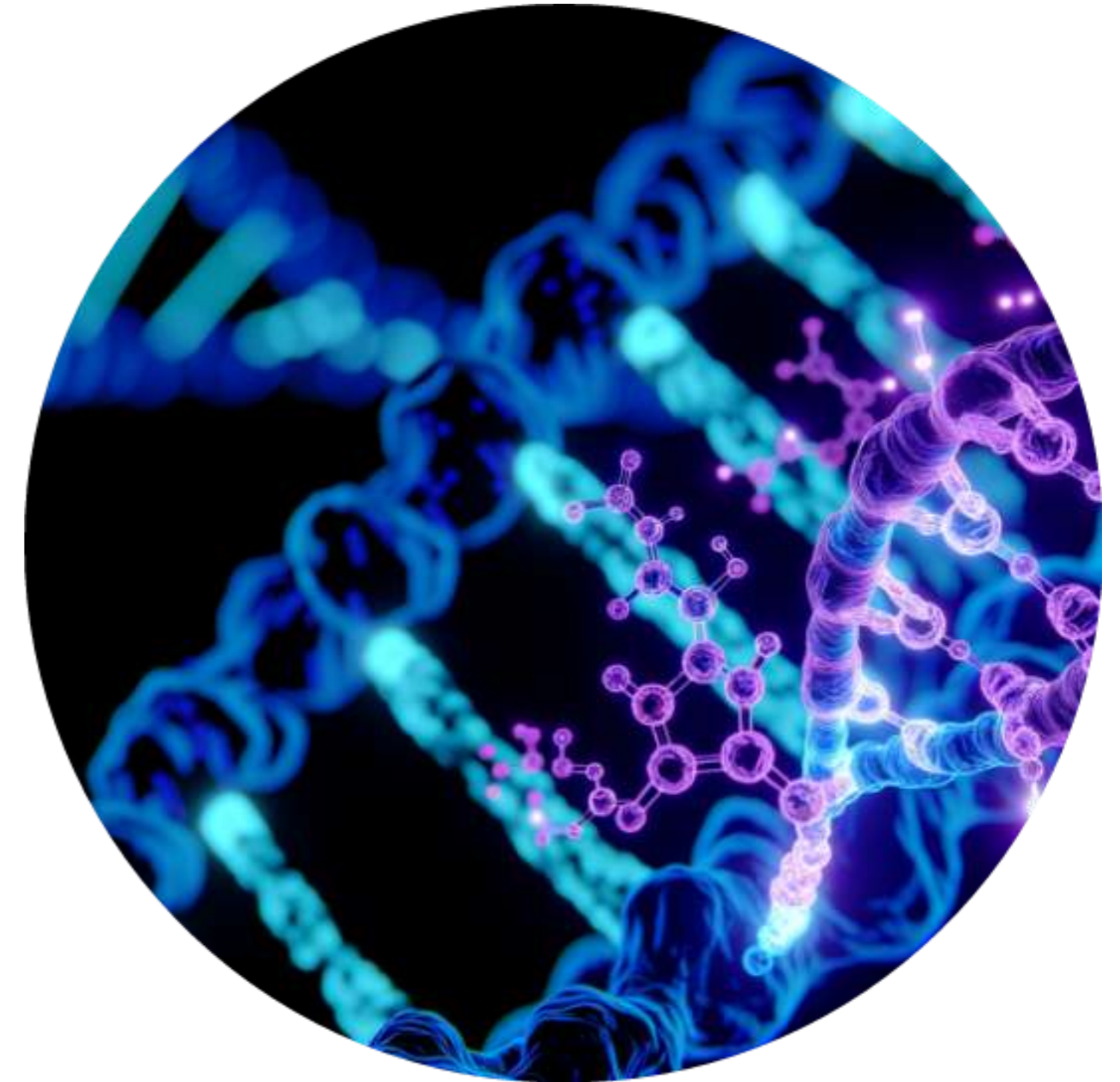
Peptides facilitate **faster healing, allowing intensified training**, but it's critical to respect signals of overtraining or fatigue. Adequate rest days and recovery modalities ensure peptides can perform their repair functions properly. Moving daily, even gently, supports circulation, lymphatic flow, and nutrient delivery, completing the recovery loop.

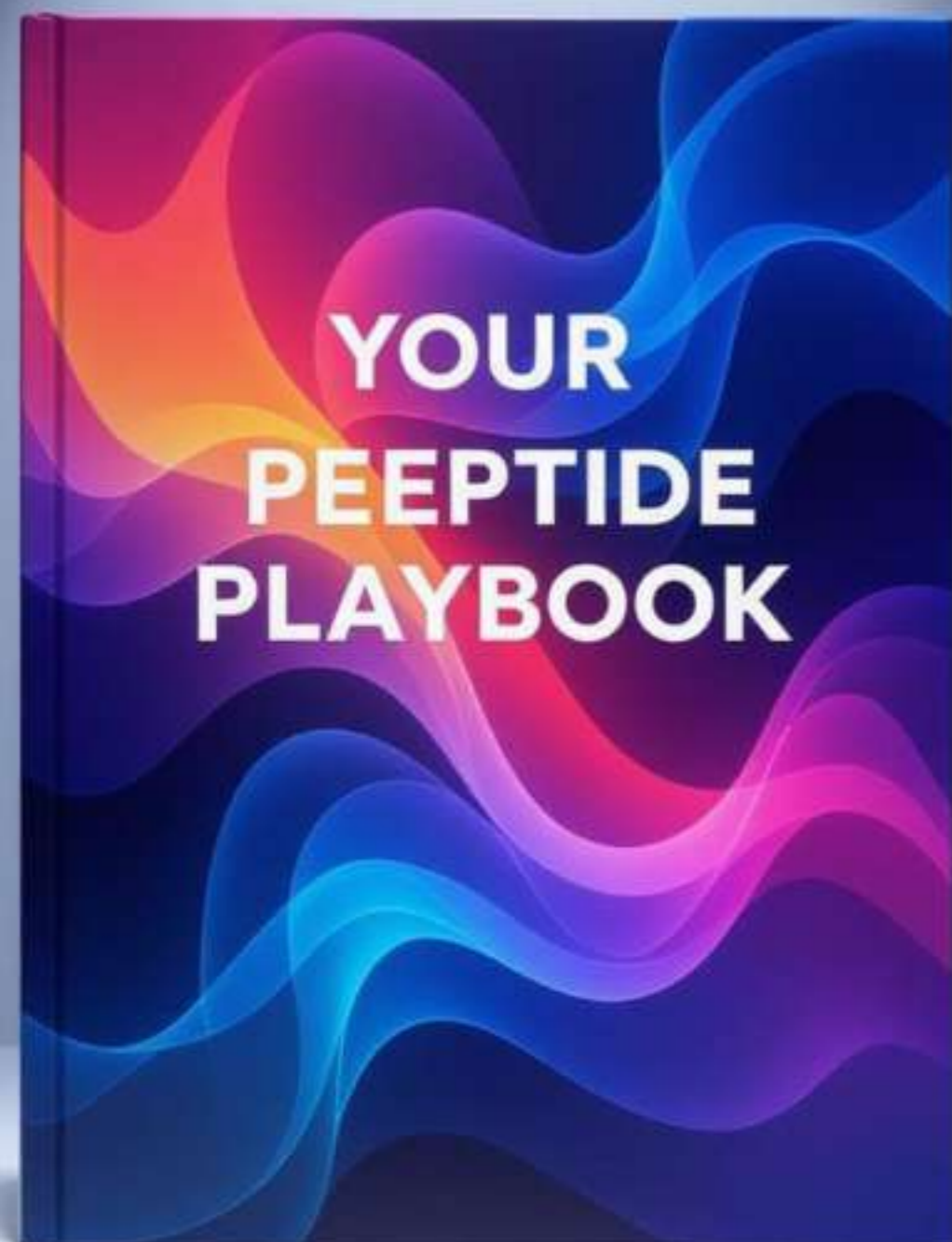


# ++ Rest and Recovery: Sealing the Deal



Quality sleep and stress management solidify peptide-driven gains. Sleep cycles promote hormone release and cellular repair crucial to peptide action. Stress reduction through mindfulness, hydration, and balanced lifestyle minimizes catabolic hormones that counteract peptide benefits. Establishing consistent habits around rest and relaxation transforms peptides from isolated supplements into integral wellness partners.





# Contents

Introduction to Peptides	01
Peptide Science and Functionality	02
Challenges in Peptide Adoption	03
Nasal Inhaler Peptides: Innovation in Delivery	04
Practical Guidelines: Dosage, Cycling, and Combinations	05
Lifestyle Foundations for Peptide Success	06
<b>Conclusion: Your Peptide Playbook</b>	<b>07</b>

# ++ Conclusion: Your Peptide Playbook



## 01 FIRST



### Recap of Key Concepts

You now understand **peptides as potent molecular messengers** essential for repair, vitality, and transformation, with a rich medical history and fast-evolving therapeutic landscape. **Nasal inhaler peptides provide practical, effective delivery for muscle repair, tanning, libido, and weight loss.** Adhering to evidence-based dosing, cycling wisely, and pairing smartly enhances results. Yet, peptides' full power unlocks only when combined with foundational lifestyle pillars: **nutrition, exercise, and rest.**

## 02 SECOND



### Empowerment and Next Steps

Armed with science and strategy, you have the tools to confidently explore peptides as part of your health journey. **Remember, peptides are not magic bullets but accelerators of your efforts.** Consistency, consultation with healthcare professionals, and respect for your body's unique needs will guide your success. **Embrace peptides as allies on your path to greatness.**

## 03 THIRD



### Important Reminder

This content is educational and not medical advice. Always seek professional guidance before starting peptide therapies to ensure safety, legality, and personalized suitability. Your health is a precious asset—invest wisely and responsibly.

# Peptide Power: Unleashing Your Prime After 40!

# Thanks



## Legal Disclaimer

The information provided in this presentation is for educational purposes only and does not constitute medical advice. I am not a licensed physician or healthcare professional. Before making any decisions regarding the use of peptides or related treatments, please consult a qualified medical professional for personalized advice and guidance.

Presenter: Thorsten Eggert  
thorsten@thorfit.com  
0828236380



Scan this code to order yours